



# Unprofessional Laying Clear Glass Mosaic

SICIS



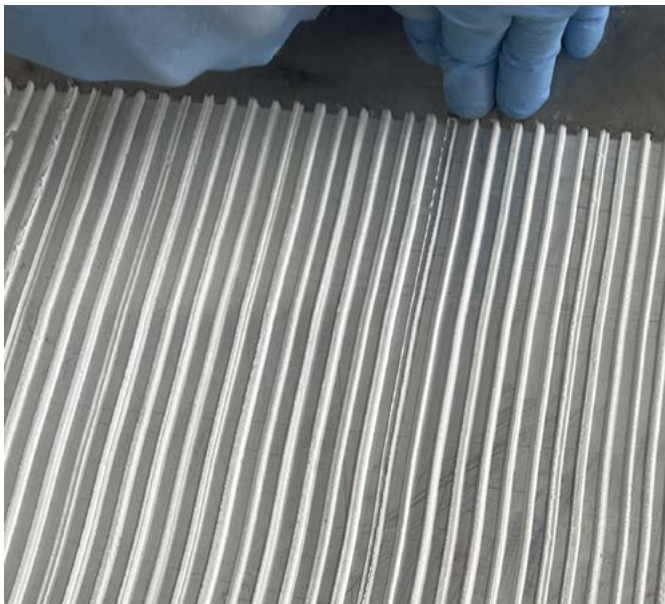
**1** Substrate base by cement



**2** Start laying the white adhesive by trowel teeth



**3** Wrong spreading leaving empty holes



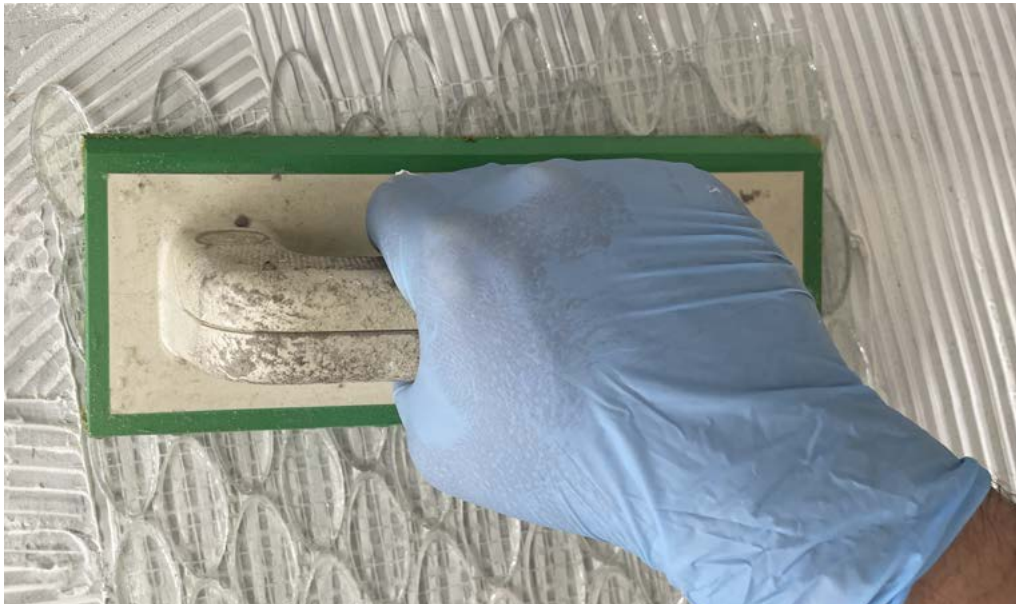
**4** Wrong empty holes



**5** Start installing clear glass mosaic



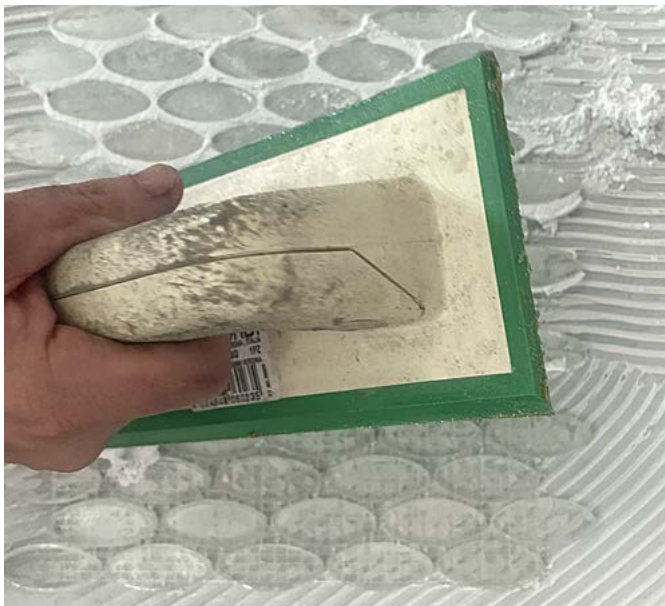
**6** Visible empty holes under the clear glass mosaic and visible white fiber mesh



**7** Pressing the glass mosaic by trowel is not sufficient to cover the visibility of the empty holes and white fiber mesh



**8** Start grouting



**9** Spread grouting



**10** Final Cleaning



**11** Final bad and incorrect look